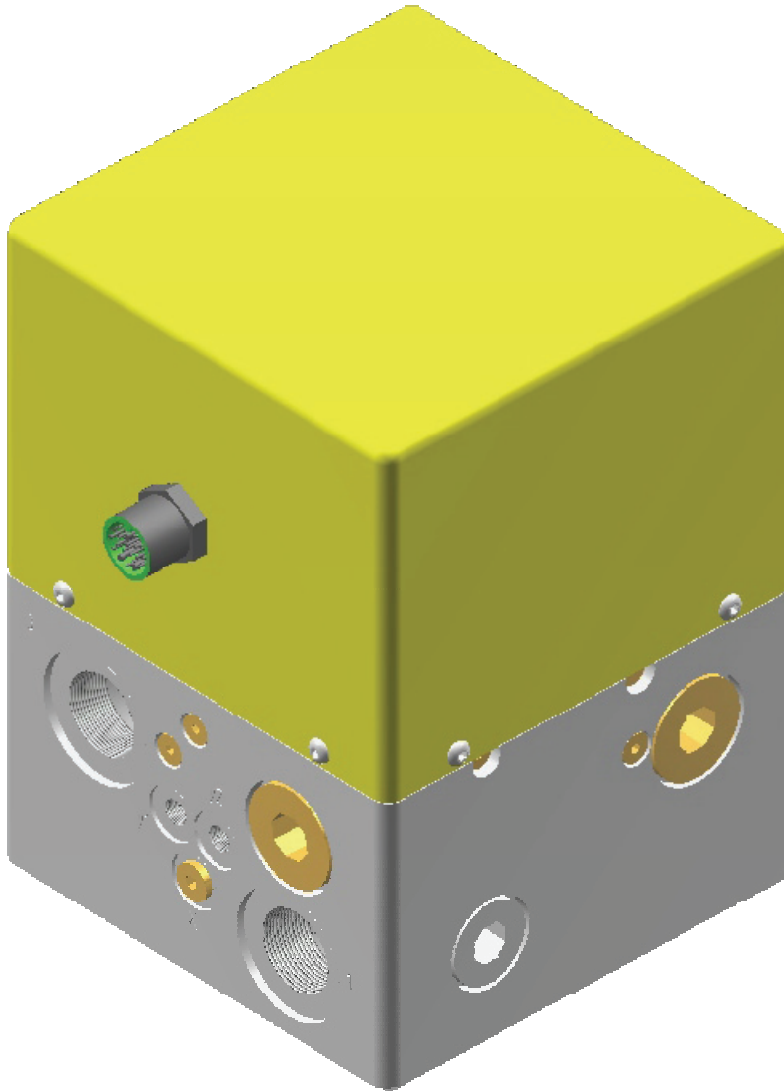




# CRHV-17-16-24VDC Control Reliable Hydraulic Double Valve



## Function

This 3-way, 2 position hydraulic valve package features redundant valve elements that allow series flow from the inlet to the outlet and parallel flow from the outlet to tank. This configuration assures that if any valving element fails to operate as requested, inlet flow will be blocked and fluid from the outlet is directed to the tank. The shifting of each valving element is monitored by its own sensor.

## Typical Applications

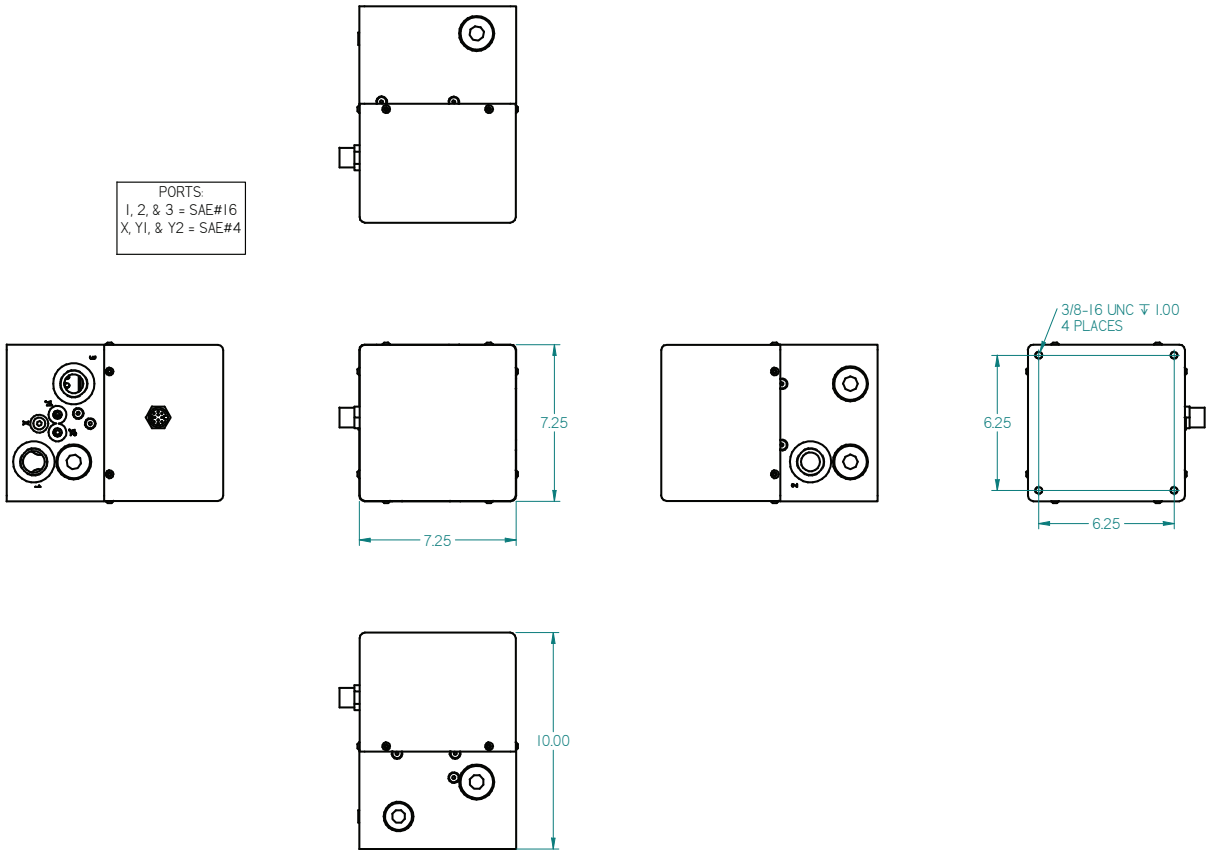
**Ports:** Inlet(1) = SAE #16  
Outlet(2) = SAE #16  
Tank(3) = SAE #16

**Solenoid Voltage:** 24 VDC / 38 watts total

**Nominal Flow Rate:** 60 GPM

Bending Machines  
Trimming Machines  
Cutting, Forming, Piercing Machines

# Dimensional Information



# Wiring Diagram

